







This term, in science, we have been learning about electricity. Try the questions below to see how much you can remember.

- For each appliance, please tick the appropriate box. The first one has been done for you.

Appliance	Battery-Powered	Battery or Mains Powered	Mains Powered	Non-electrical appliance
 saucepan				✓
 torch				
 microwave				
 potato peeler				
 washing machine				
 alarm clock				

- Draw **three** lines to match the definitions with the correct key word.

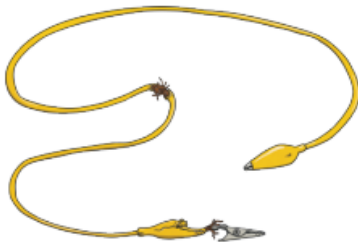
mains electricity	●
appliance	●
series circuit	●

● A piece of equipment or device designed to perform a particular job.
● Where components are connected with wires in a loop and electricity flows around in a single pathway.
● Electricity supplied through wires to a building.

3. This light bulb is on. What does this tell you about the 10p coin?

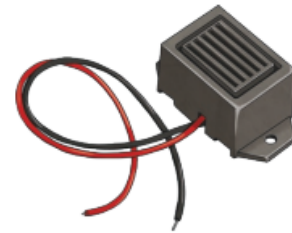


4. What should you do if you find some damaged or broken electrical equipment? Tick **two** boxes.



- tell an adult
- continue to use it
- put it back with the rest of the equipment
- do not use it

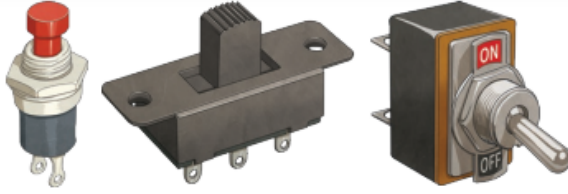
5. What is this a picture of, and what does it do?



6. Look at the circuit diagram and circle the correct answers to say what you think will happen, and why.

	<p>I think that the bulb <u>will / will not</u> light up.</p> <p>This is because the circuit is <u>complete / incomplete</u>.</p>
	<p>I think that the bulb <u>will / will not</u> light up.</p> <p>This is because the circuit is <u>complete / incomplete</u>.</p>
	<p>I think that the bulb <u>will / will not</u> light up.</p> <p>This is because the circuit is <u>complete / incomplete</u>.</p>

7.



a. These pictures are all of what type of component? _____

b. What is the job that these electrical components do? _____

8. Circle whether each of the following objects is an insulator or conductor.

Object	Is the material an insulator or conductor?
metal coin	<u>insulator / conductor</u>
plastic ruler	<u>insulator / conductor</u>
piece of paper	<u>insulator / conductor</u>
aluminium (metal) foil	<u>insulator / conductor</u>
metal paperclip	<u>insulator / conductor</u>
rubber	<u>insulator / conductor</u>

9. Complete these sentences using the word bank below.

switches	wires	cells	plugs
----------	-------	-------	-------

A battery is a collection of two or more _____.

_____ are used to connect the different components in the circuit together.

10. Can you name each of the following?







